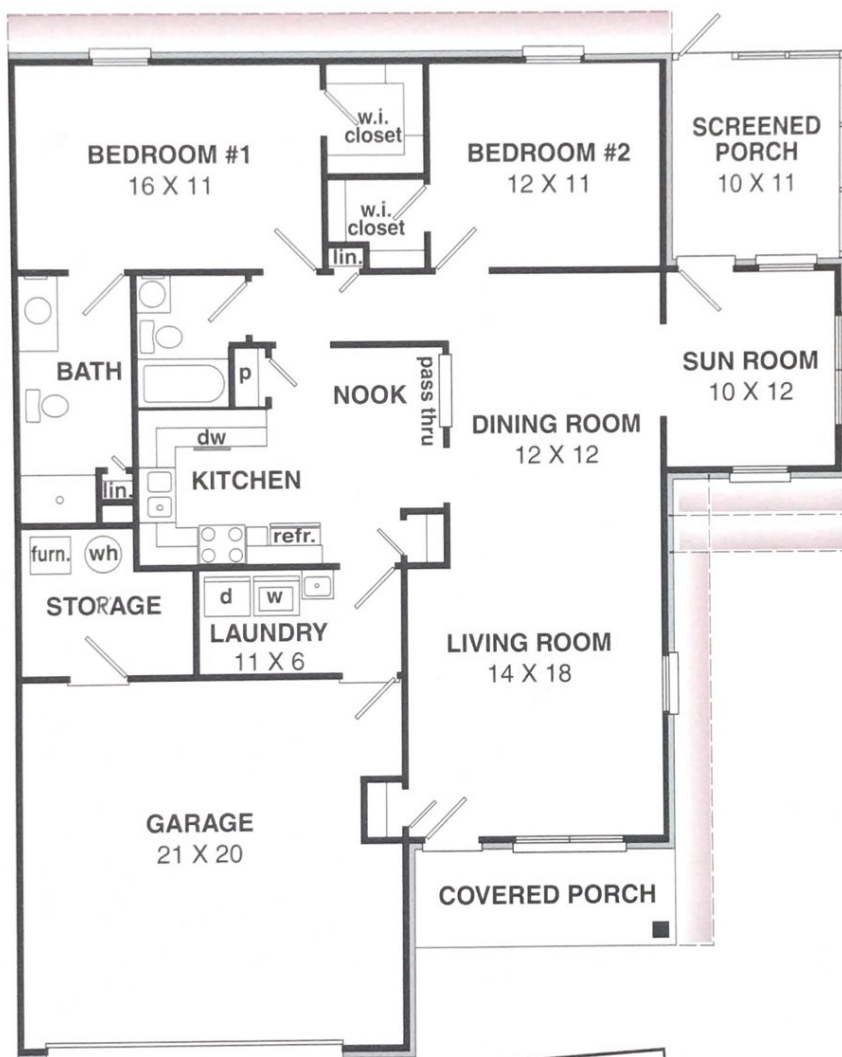


BASE•PLUS Plan

CDI homes are designed to fit the changing lifestyle of those 55 and above. Empty-nesters, retirees, and active older adults desiring to maintain an independent lifestyle will find a CDI home tailor made for them. CDI's award winning designs, features and construction allow you to enjoy your present lifestyle in a setting that can accommodate your future needs.



This floorplan is a stylized representation of a basic CDI home. Features and options are generalized, and dimensions are nominal. Actual features, options and dimensions are subject to approved construction drawings.

Community Development, Inc.
P.O. Box 17068
Indianapolis, Indiana 46217
1-800-488-6555



The prestigious **DIAMOND BUILDER AWARD** is your assurance that CDI is a builder of quality homes and communities.

COMMUNITY DEVELOPMENT, INC.

www.communitydevelop.com

CDI BASE•PLUS PLAN

Basic Plan:

- 2 Bedrooms
- 2 Walk-in Closets
- 2 Baths
- Sun Room
- Eat-in Kitchen
- Dining Room
- Screened Porch
- 2-Car Garage
- Laundry Room
- Storage Room

Options:

- 2' Extension on Bedrooms
- 2' Extension on Living Room
- 2' or 4' Extension on Sun Room
- Appliances

Standard Features:

- 10-Year Structural Warranty
- Air Conditioning
- Complete Security System with Emergency Button
- Landscaping
- 36" Wide Doors and Wide Hallways
- Rocker Arm Light Switches
- Tilt-in Windows
- 4 Phone & 4 Cable Outlets
- Garage Door Opener
- And Much More...

